

focus on LEARNING

Community Unit School District 200 • November 2007

OUR VISION is to be an exemplary, student-focused school district that is highly regarded for the competence and character of our students and the excellence of our people, programs, and learning environment.



OUR MISSION is to inspire, educate, challenge, and support all students to reach their highest level of learning and personal development.

New Leadership Joins the District

This past July, District 200 welcomed a new superintendent to the community, Dr. Richard Drury. Dr. Gary Catalani, former superintendent of District 200, retired in June. "We are extremely excited to bring Dr. Drury to District 200 as the next superintendent," Board President Andy Johnson said. "He has the *background, the commitment, and the personal characteristics* that will serve our communities well and enable us to move to the next level of excellence."

Dr. Drury was among three finalists that emerged from a group of five who were presented to the Board by the search firm of Hazard, Young, Attea & Associates. After a second round of interviews, two Board Members visited each of the candidate's respective school districts. The Board selected Dr. Drury as their unanimous choice.

"During the interview process, we relied heavily on the feedback we received from residents and staff during focus groups last fall," Mr. Johnson explained, noting that Dr. Drury was the candidate that best met the needs expressed during those meetings. He said confidentiality was important during the process because the three finalists were sitting superintendents who were recruited by the search firm.

During his introduction to District 200, Dr. Drury said he was "excited to become a part of this exceptional community and have the *unique opportunity to lead a strong, dynamic team of professional educators.*" He pledged to work with the community and staff "to expand on District 200's strengths and *continue to strive for academic excellence for all children.*" He has met with the staff at each of the District's 20 schools and made a number of presentations to community groups and organizations during the first several weeks of the school year.

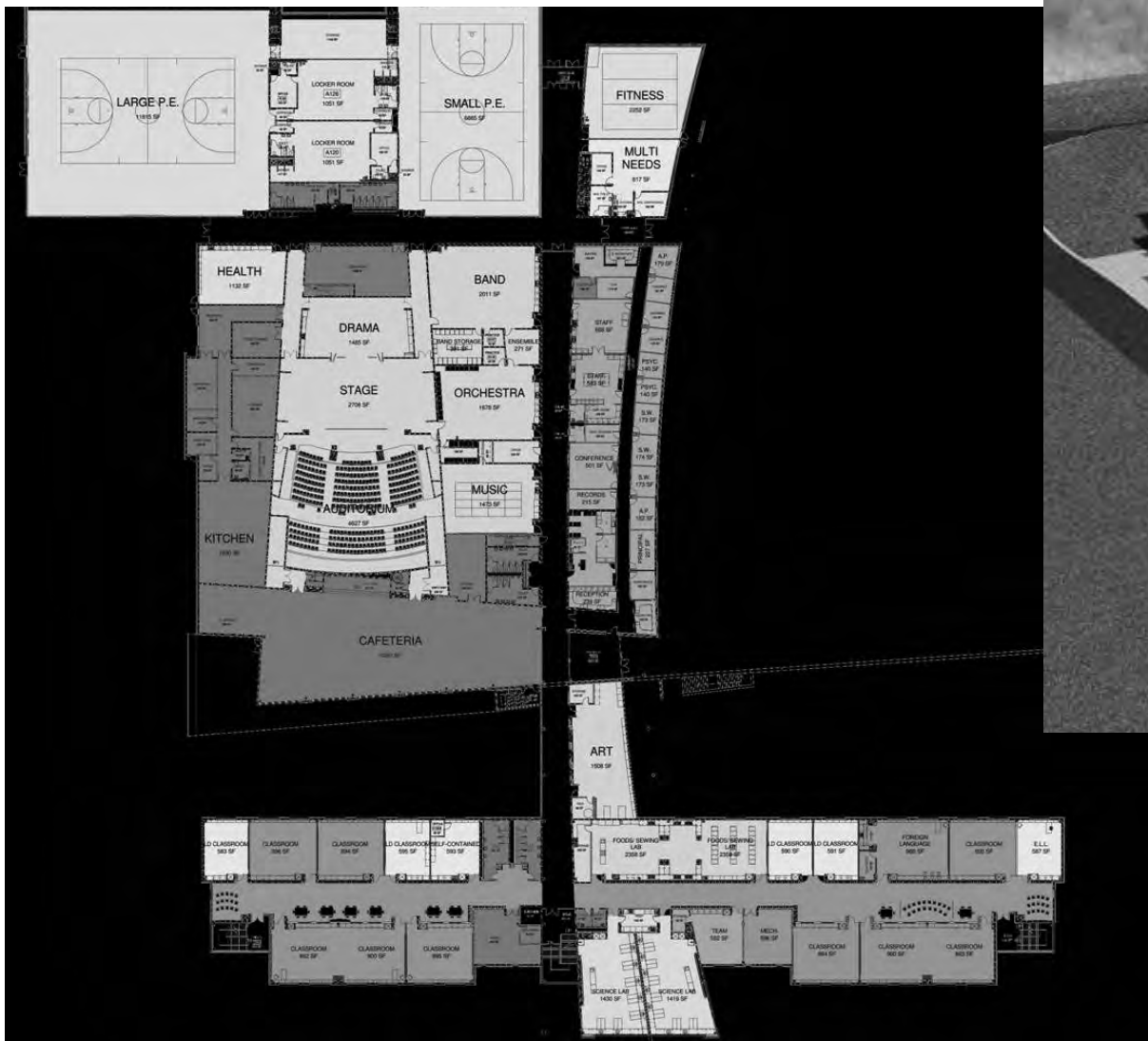
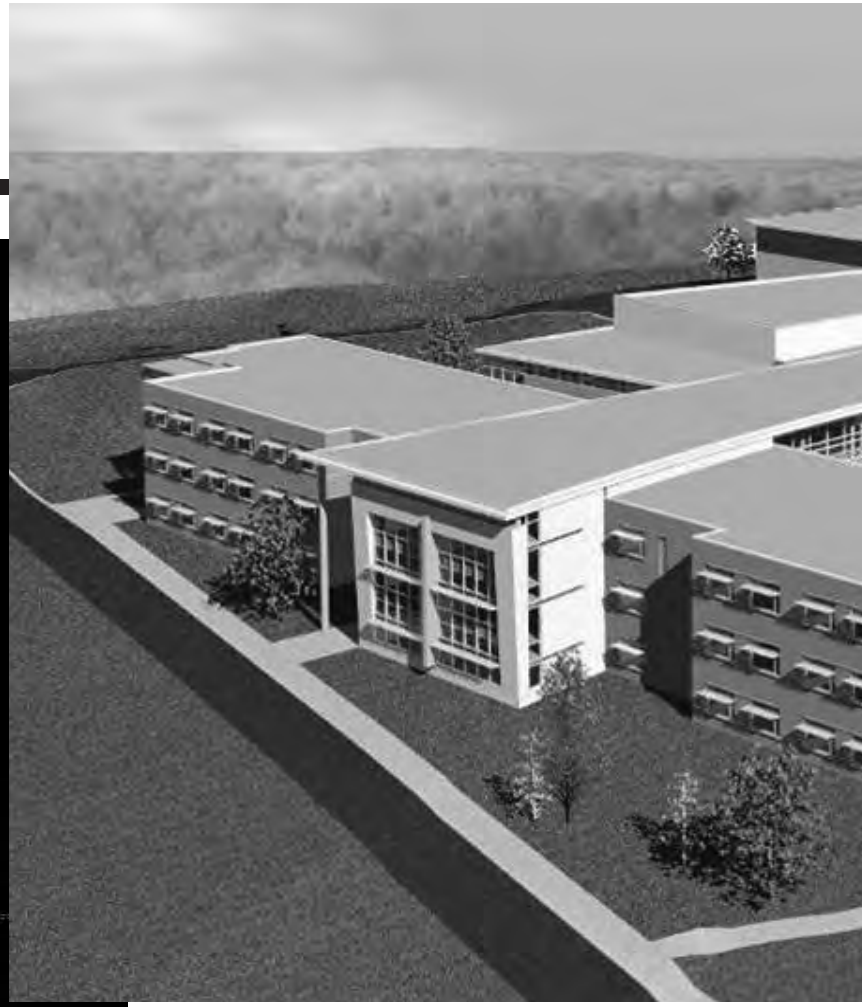
Dr. Drury brings with him 18 years of experience as a superintendent, 12 years as a principal, and seven years as a classroom teacher. Prior to his most recent position in Muskego, Wisconsin, Dr. Drury was superintendent in two Michigan school districts. He earned his doctorate in Educational Leadership from Western Michigan University, a masters' in Curriculum and Supervision from Northern Illinois University, and an undergraduate degree in English Language and Literature from Eastern Michigan University.

He and his wife, Candace, have two married sons.



Dr. Richard W. Drury
Superintendent

Hubble Referendum

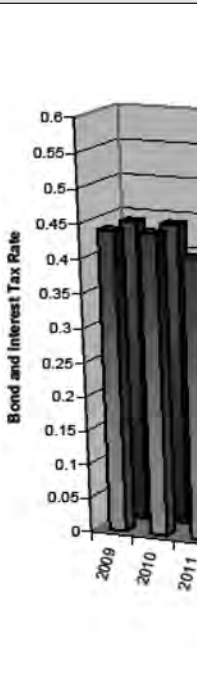


The Plan

The Board of Education has studied the issues that face Hubble Middle School for a number of years. In January 2004, after reviewing all the viable options, the Board unanimously approved the plan to replace the current Hubble Middle School and build a new one in the southwest part of the District. The plans for the new school call for a building designed to meet the instructional and safety needs of middle school children, while at the same time being environmentally responsible. The building has been designed under Leadership in Energy and Environmental Design (LEED®) standards which include the use of renewable materials, energy efficient mechanical components/design, and environmentally friendly design features. These LEED® design considerations will not only help and protect the environment, they will also save the District and taxpayers an estimated \$3.2 million over the next 20 years. The plans call for opening the new building in August of 2009, following the passage of the referendum on February 5, 2008.

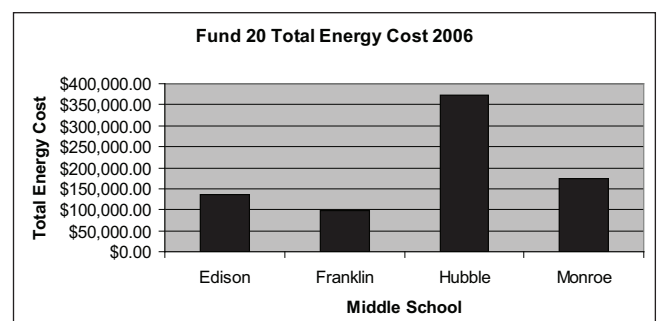
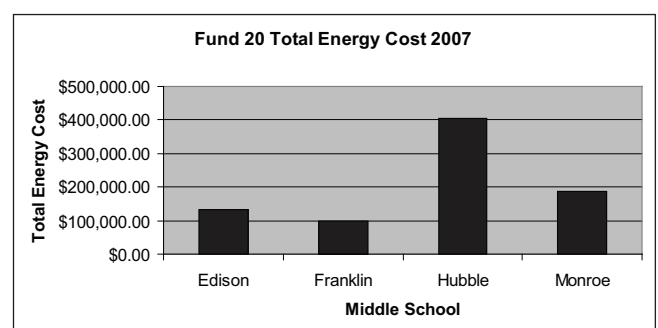
The Cost

- The total cost to build the new Hubble Middle School is \$58 million. This includes the cost of the property, but does not include any revenue savings from the sale of the current property.
- The District's bond counsel, Robert W. Baird & Company, Inc., has developed a bond retirement schedule using very conservative assumptions. These assumptions indicate the District's equalized assessed valuation will increase 5% annually and home values in the District will increase by 4% annually. The project will be financed over 14 years, which does not extend the District's current debt calendar.
- The current debt service tax rate for the District is 44 cents per \$100 of assessed valuation. If the referendum passes on February 5, 2008, this rate will not increase.



What are the conditions at the current Hubble?

- The current school is over 80 years old and in need of significant repair and renovations to its mechanical systems.
- The current school is not handicapped accessible. For example, if a child is injured in the gym and must be transported by wheelchair, he or she must be taken outside in order to reach the nurse's office.
- The building is not energy efficient (see charts at right). It costs as much to heat and cool the current Hubble as it does to heat and cool either Wheaton North or Wheaton Warrenville South High Schools. Each high school is twice the size of Hubble.
- The costs to repair, renovate, and upgrade the current building to present building codes and instructional standards is estimated to exceed the cost of the proposed new building.
- There is insufficient electrical service to power equipment and computers. These electrical limitations negatively impact students' ability to work with technology.
- The science lab equipment works inconsistently due to the age of the building.





What are some of the aspects of the new Hubble if it were built?

- The building will be designed for middle school students and will support appropriate instructional programming.
- The building will use high performance, sustainable “Green” design features: daylight harvesting, energy recovery, bioswales and water efficiency landscaping, and high efficiency heating and air conditioning systems. It will be LEED (Leadership in Energy and Environmental Design) certified.
- The facility will support a wide variety of instructional groupings from individualized instruction to large group presentations.
- There will be ample electrical support for computers, equipment, and technology.
- A new Hubble will provide space for community recreation and presentations including a 450 seat auditorium.
- The new building will be more efficient to operate with anticipated energy savings estimated at \$3.2 million over the next 20 years, using current energy rates.
- The sustainable design features will provide environmental teaching stations and may include a “green roof.”
- The project would move the current Hubble site to the property tax rolls.

- If the District’s assessed valuation increases and when the proceeds from the sale of the current property are applied to reduce the District’s debt, the 44 cent rate is expected to decrease and the annual cost to the taxpayers will be reduced.
- Without the \$58 million bond sale, the debt service tax rate is scheduled to decline in 2011.

Projected Annual Tax Impact of \$58 Million Dollar Sale for Debt and Interest

YEAR	CURRENT BOND TAX RATE	*BOND TAX RATE AFTER REFERENDUM	OWNER OF \$250,000 HOME	OWNER OF \$350,000 HOME	OWNER OF \$450,000 HOME
2009	\$0.44	\$0.44	\$0.00	\$0.00	\$0.00
2010	\$0.44	\$0.44	\$0.00	\$0.00	\$0.00
2011	\$0.41	\$0.44	\$26.00	\$36.00	\$47.00
2012	\$0.35	\$0.44	\$79.00	\$113.00	\$147.00
2013	\$0.32	\$0.44	\$111.00	\$158.00	\$205.00

*The proposed tax rate does not include potential revenue from the sale of the Hubble property that would be used to reduce District debt and lower the tax rate

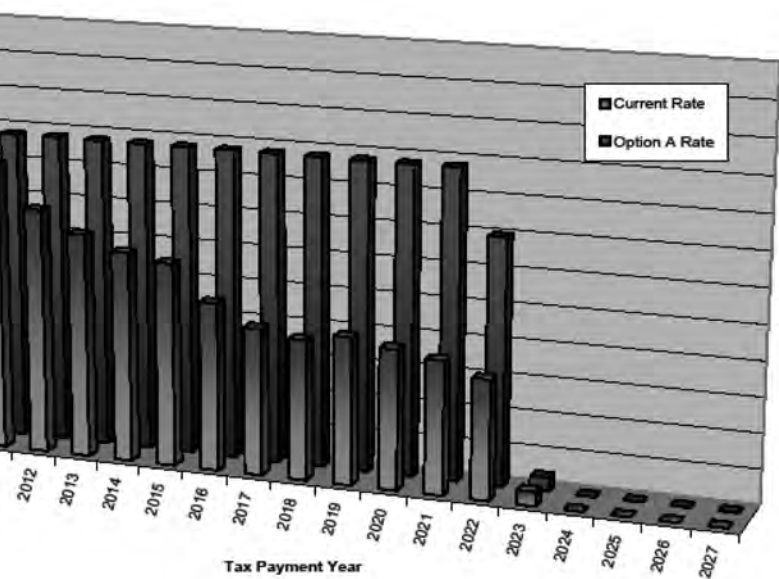
*The proposed tax rate does not include any increase in Equalized Assessed Valuation (EAV) generated by the development of the Hubble property that would lower the tax rate

Assumptions:

- The District's Equalized Assessed Valuation will increase by 5% annually
- The home value will increase 4% annually
- Calculations include the General Homestead Residential Exemption (\$5,000)
- Calculations exclude the Senior Citizens Homestead and Assessment Freeze Exemptions

A complete debt retirement schedule can be found on the District's web site at: cusd200.org "[All Hubble Middle School Update!](#)"

Comparison of Current Bond and Interest Tax Rate to Projected Bond and Interest Tax Rate



Frequently Asked Questions

What will happen to the current Hubble site?

The District will sell the property.

What will the current Hubble site be used for?

The site plan will be determined by the new owner and the City of Wheaton. Some initial discussions by members of the Wheaton community have included flood plain control, recreation areas, retail, green space, and possibly some housing.

What other options did the Board of Education consider?

The Board studied repairing and remodeling the current building, building a new school on the existing site, building a new school on a new site.

Why build a school in the southwest part of the District?

There are only four students who currently walk to Hubble. Three of the four middle schools are in close proximity to each other and the new location would be more geographically central for most students who attend Hubble.

How much will it sell for?

A recent commercial appraisal estimated the current Hubble property is worth over \$21 million dollars.

What will happen to the proceeds from the sale of the property?

The School Board will use the funds to reduce the District’s bond debt.

When will those funds be applied to the debt?

As soon as the property is sold.

Is the proposed site “clean”?

The District conducted an independent risk assessment of the property as well as an analysis by the Illinois Environmental Protection Agency (IEPA). Both reports indicated that the site was safe for school use. The IEPA gave the site its highest rating, stating that the land, in its present condition with no work or remediation, is suitable for housing use.

Does the District own the property for the new Hubble?

No. The District is under a contract to purchase the property that includes three contingencies:

1. A positive risk assessment – that has been delivered by an independent firm
2. A positive clearance letter from the Illinois Environmental Protection Agency – which has been received and reported that the property is completely safe
3. A successful referendum

If the referendum passes in February when would the new Hubble school open?

August 2009

Non Profit Org.
U.S. POSTAGE
PAID
Wheaton, IL
Permit No. 783



Board of Education
Andrew Johnson, President
Rosemary Swanson, Vice President
Barbara Intihar, Secretary
Ken Knicker
John Bomher
Joann Coghill
Marie Slater
Dr. Richard W. Drury
Superintendent

130 W. Park Avenue
Wheaton, IL 60187

Community Unit School District 200

Postal Patron
Wheaton, IL 60187

Your opinions and questions are important to us. Please take a moment to comment on or ask questions about District 200 and its programs. We are especially interested in your suggestions on the type of information you'd like to see included in future issues of **Focus on Learning**. **FEEDBACK** may be delivered or mailed to the School Service Center, 130 W. Park Ave., Wheaton, or faxed to 630-682-2326. Please include your name, address and daytime phone if you would like a response to your comments.

Feedback

District 200 serves an active and involved community that values education and has high expectations for its schools and students. With a proud tradition of excellence in academic and co-curricular activities, the District serves approximately 14,000 students from pre-school through high school in Wheaton, Warrenville, and portions of Carol Stream, Winfield, and West Chicago

Important news about the Hubble Referendum

Inside

District 200 Awards

- Wheaton Warrenville South and Wheaton North High Schools were recognized in the top 25 high schools, from a field of 692, for their performance on the 2007 Illinois Prairie State Achievement Exam.

- The State of Illinois recently announced the 2006 Illinois Honor Roll. The Honor Roll recognizes academic achievement awards including an Academic Improvement Award and Academic Excellence Award.

Community Unit School District 200 is one of five districts in the state to receive recognition for four or more schools. Bower Elementary School and Johnson Elementary School were recognized with an Academic Improvement Award. Schools qualifying for this award experienced substantial gains in academic achievement in both reading and mathematics for both the 2005 and 2006 testing sessions.

Longfellow, Pleasant Hill, Sandburg, Whittier and Wiesbrook Elementary Schools were recognized with an Academic Excellence Award. Schools qualifying for this award met all requirements for AYP and 90% or more of the students met or exceeded state standards in reading and mathematics for three consecutive years.

- Pleasant Hill Elementary School was named a Blue Ribbon School by the U.S. Department of Education in 2006. The award, given to 15 Illinois schools and 250 nationwide, recognizes the school's high scores on state achievement tests.

LONGFELLOW ELEMENTARY SCHOOL AWARDED 2007 NCLB BLUE RIBBON AWARD

Longfellow Elementary School has been identified as a Blue Ribbon School by the U.S. Department of Education for its high achievement on state tests and its incremental improvement over the last three years. This is the second year a District 200 school has been awarded the prestigious national honor. Last year, Pleasant Hill Elementary School was awarded the 2006 NCLB Blue Ribbon Award.

The No Child Left Behind Blue Ribbon Award is one of the highest education awards in the country and honors schools for helping students achieve at very high levels and for making significant progress in closing the achievement gap. The award recognizes schools whose students achieve in the top 10 percent of their state or those who show dramatic improvement while having at least 40 percent of their students from disadvantaged backgrounds. Of the 413 nominated schools, only 287 schools were selected for the award nationally. Of those 287 schools, only 19 were from Illinois.

On October 16, a representative from the U.S. Department of Education visited Longfellow and presented the award during an all school assembly. Wheaton Mayor Mike Gresk attended the ceremony and the

City of Wheaton proclaimed the day "Longfellow Elementary Blue Ribbon Day". The national awards ceremony took place in Washington D.C. on November 12-13.

Longfellow Principal Dianne Thornburg said, "As a veteran administrator in District 200 and a community member, it's a privilege to be associated with a school and staff that earned the Blue Ribbon Award under Paul McKinney, who retired in 2007. The Longfellow staff and students are certainly deserving of this recognition for their dedication to learning."

"Having served as principal at Longfellow for 12 years and knowing the level of commitment for excellence demonstrated daily by the faculty, I am pleased to see the teachers recognized with the Blue Ribbon Award for their desire for excellence in their classrooms," said Paul R. McKinney. "I am also pleased for the community who has been committed to Longfellow through its efforts to construct a new school facility and through its financial commitment to curriculum development. This commitment has been rewarded with two consecutive Blue Ribbon Awards, something highly unusual, but certainly deserved by District 200."

This page is for other indicias only.
Printer: please insert on mailing panel
in same position as indicia shown.
There are a total of 5 versions.

Non Profit Org.
U.S. POSTAGE
PAID
Wheaton, IL
Permit No. 783

Postal Patron
Winfield, IL 60190

Non Profit Org.
U.S. POSTAGE
PAID
Wheaton, IL
Permit No. 783

Postal Patron
West Chicago, IL 60185

Non Profit Org.
U.S. POSTAGE
PAID
Wheaton, IL
Permit No. 783

Postal Patron
Carol Stream, IL 60188

Non Profit Org.
U.S. POSTAGE
PAID
Warrenville, IL
Permit No. 12

Postal Patron
Warrenville, IL 60555